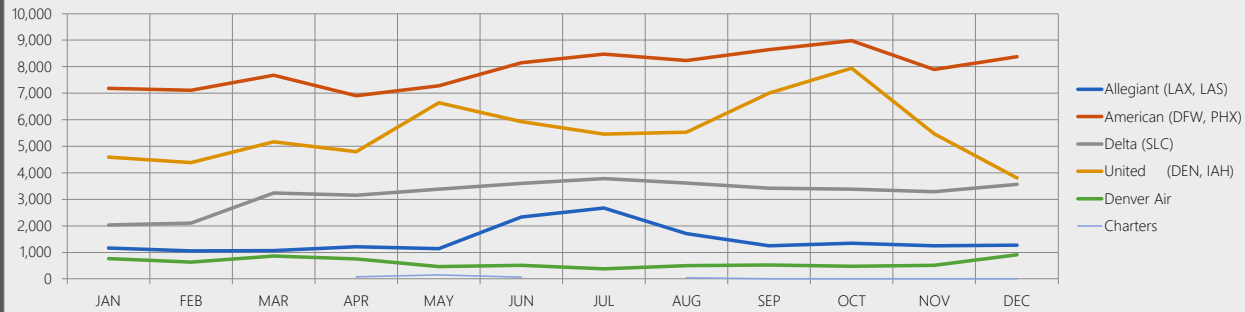




GRAND JUNCTION REGIONAL AIRPORT

December 2016
DATA & STATISTICS

Passenger Enplanements



2016	Allegiant (LAX, LAS)	American (DFW, PHX)	Delta (SLC)	United (DEN, IAH)	Denver Air	Charters	Total	Annual Inc/Dec
JAN	1,164	7,181	2,031	4,589	770	0	15,735	↑ 2.4%
FEB	1,050	7,105	2,102	4,390	632	230	15,509	↑ 11.5%
MAR	1,070	7,678	3,243	5,173	859	0	18,023	↑ 8.3%
APR	1,208	6,907	3,150	4,795	750	74	16,884	↑ 4.3%
MAY	1,142	7,275	3,380	6,645	467	148	19,057	↓ -2.8%
JUN	2,339	8,147	3,602	5,925	515	66	20,594	↑ 1.0%
JUL	2,674	8,475	3,787	5,455	383	0	20,774	↓ -4.3%
AUG	1,709	8,236	3,616	5,535	503	44	19,643	↓ -3.8%
SEP	1,250	8,645	3,418	6,999	527	0	20,839	↑ 6.2%
OCT	1,341	8,978	3,378	7,946	476	0	22,119	↑ 11.6%
NOV	1,252	7,896	3,281	5,465	509	0	18,403	↑ 5.1%
DEC	1,267	8,375	3,569	3,800	913	0	17,924	↑ 0.9%
TOTAL	17,466	94,898	38,557	66,717	7,304	562	225,504	3.4%

2015	Allegiant (LAX, LAS)	American (DFW, PHX)	Delta (SLC)	United (DEN, IAH)	Denver Air	Charters	Total
JAN	1,124	6,334	2,050	5,214	650	0	15,372
FEB	1,072	5,610	1,952	4,710	500	60	13,904
MAR	1,266	6,138	2,358	6,121	655	109	16,647
APR	1,207	5,930	2,267	6,336	449	0	16,189
MAY	1,070	6,978	2,468	8,530	557	0	19,603
JUN	2,307	7,119	2,370	7,834	506	245	20,381
JUL	2,697	8,133	2,437	7,851	594	0	21,712
AUG	2,123	8,178	2,397	7,126	542	62	20,428
SEP	1,011	7,530	2,331	8,263	489	0	19,624
OCT	1,426	7,834	2,230	7,880	455	0	19,825
NOV	1,244	6,999	2,194	6,480	590	0	17,507
DEC	1,250	8,066	2,201	5,583	522	134	17,756
TOTAL	17,797	84,849	27,255	81,928	6,509	610	218,948

2016 Enplaned and Deplaned Airfreight

2015 YTD

Enplaned Freight	3,608,995
Deplaned Freight	6,250,522

2016 YTD

Enplaned Freight	4,530,924	↑ 25.55%
Deplaned Freight	7,934,776	↑ 26.95%

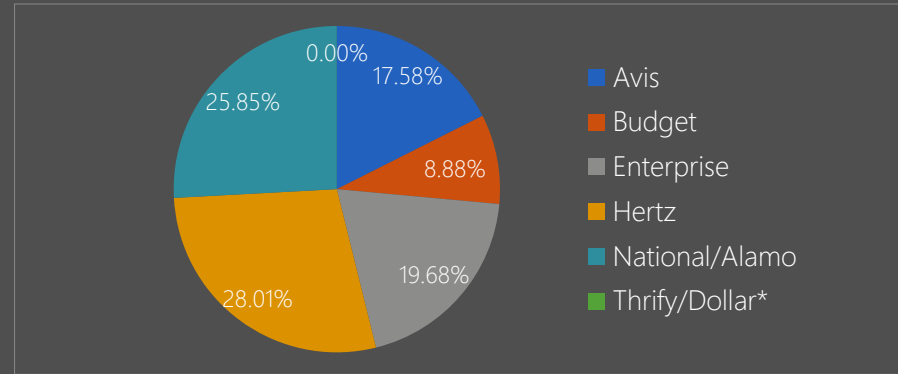
Enplaned	FedEx	Key Lime	US Airways	American	Total
JAN	320,798	24,062		1,484	346,344
FEB	270,726	28,724		1,154	300,604
MAR	313,421	33,157		933	347,511
APR	261,552	29,547		886	291,985
MAY	214,878	30,721		463	246,062
JUN	258,695	29,033		1,065	288,793
JUL	254,862	27,601		1,094	283,557
AUG	293,850	36,856		731	331,437
SEP	272,728	30,298		1,335	304,361
OCT	245,746	29,749		-	275,495
NOV	229,174	26,842		131	256,147
DEC	1,226,933	30,831		864	1,258,628
TOTAL	4,163,363	357,421	-	10,140	4,530,924

Deplaned	FedEx	Key Lime	US Airways	American	Total
JAN	542,170	55,930		744	598,844
FEB	489,891	56,290		1,196	547,377
MAR	557,597	57,575		743	615,915
APR	408,808	59,405		397	468,610
MAY	419,274	56,200		4	475,478
JUN	571,245	67,161		397	638,803
JUL	534,814	62,045		114	596,973
AUG	568,123	64,425		165	632,713
SEP	508,750	59,280		384	568,414
OCT	431,126	64,685		278	496,089
NOV	455,158	63,195		331	518,684
DEC	1,695,500	81,025		351	1,776,876
TOTAL	7,182,456	747,216	-	5,104	7,934,776

2016 Rental Car Revenues

2015 YTD Revenues 7,485,732.83

2016 YTD Revenues 8,295,937.70 ↑ 10.82%



2016	Avis	Budget	Enterprise	Hertz	National/Alamo	Thrifty/Dollar*	Total
JAN	87,090	51,030	114,689	181,637	121,442	0	555,889
FEB	102,332	50,685	98,609	156,143	144,677	0	552,446
MAR	128,826	62,200	118,736	177,186	158,836	0	645,783
APR	92,382	51,176	111,542	115,418	135,934	0	506,451
MAY	126,627	44,381	140,140	210,857	185,287	0	707,291
JUN	132,306	64,548	160,924	240,525	197,208	0	795,511
JUL	133,594	77,589	170,935	268,139	242,613	0	892,870
AUG	151,755	76,416	160,062	236,938	227,472	0	852,643
SEP	162,899	79,451	167,988	211,506	213,973	0	835,817
OCT	168,929	91,436	159,613	220,078	221,156	0	861,212
NOV	91,319	55,230	109,458	150,742	146,551	0	553,301
DEC	79,986	32,439	120,277	154,294	149,728	0	536,724
TOTAL	1,458,045	736,581	1,632,975	2,323,463	2,144,875	0	8,295,938
Market Share	17.58%	8.88%	19.68%	28.01%	25.85%	0.00%	100.00%

*Rental Car Company located OFF-AIRPORT.

2016 Aircraft Operations

2016	ITINERANT					LOCAL			TOTAL
	Air Carrier	Air Taxi	General Aviation	Military	TOTAL ITINERANT	Local Civilian	Local Military	TOTAL LOCAL	
JAN	173	1,050	1,144	127	2,494	518	130	648	3,142
FEB	126	1,003	1,397	152	2,678	802	120	922	3,600
MAR	175	1,209	1,487	155	3,026	678	104	782	3,808
APR	79	1,095	1,183	184	2,541	580	70	650	3,191
MAY	114	1,177	1,508	121	2,920	820	70	890	3,810
JUN	226	1,141	1,844	183	3,394	564	122	686	4,080
JUL	273	1,070	1,872	161	3,376	592	76	668	4,044
AUG	235	1,014	1,952	182	3,383	622	106	728	4,111
SEP	275	929	1,746	176	3,126	588	80	668	3,794
OCT	265	938	1,746	165	3,114	1,158	50	1,208	4,322
NOV	373	633	1,338	215	2,559	922	170	1,092	3,651
DEC	426	821	1,185	88	2,520	914	14	928	3,448
TOTAL	2,740	12,080	18,402	1,909	35,131	8,758	1,112	9,870	45,001

Historial Data	2012	2013	2014	2015	2016	2014-2015 Inc/Dec
JAN	4,083	3,945	4,453	3,363	3,142	↓ -6.57%
FEB	3,523	4,014	3,188	3,360	3,600	↑ 7.14%
MAR	4,196	4,269	3,678	3,966	3,808	↓ -3.98%
APR	3,821	4,044	4,027	3,597	3,191	↓ -11.29%
MAY	4,240	4,111	3,865	3,573	3,810	↑ 6.63%
JUN	4,588	4,974	4,176	3,968	4,080	↑ 2.82%
JUL	4,835	4,233	4,710	3,671	4,044	↑ 10.16%
AUG	4,412	4,023	3,993	3,680	4,111	↑ 11.71%
SEP	3,739	3,844	3,757	3,801	3,797	↓ -0.11%
OCT	4,498	4,277	3,809	3,672	4,322	↑ 17.70%
NOV	3,586	3,438	3,094	3,175	3,651	↑ 14.99%
DEC	3,553	3,444	3,290	3,298	3,448	↑ 4.55%
TOTAL	49,074	48,616	46,040	43,124	45,004	