



GRAND JUNCTION REGIONAL AIRPORT

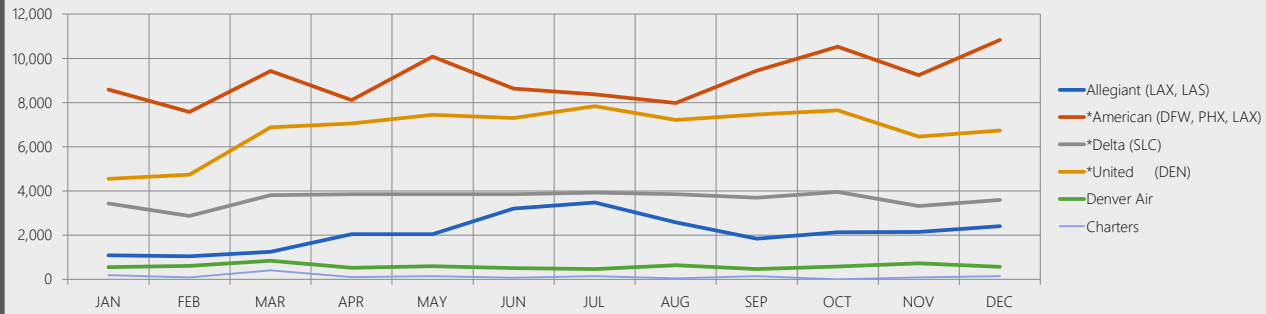
---

**December 2019**

**DATA & STATISTICS**

# Passenger Enplanements (Rev & Non-Rev)

\*Prior numbers have been adjusted to include non-revenue passengers



2019	Allegiant (LAX, LAS)	*American (DFW, PHX, LAX)	*Delta (SLC)	*United (DEN)	Denver Air	Charters	Total	Annual Inc/Dec
JAN	1,088	8,599	3,432	4,541	545	188	18,393	↑ 13.0%
FEB	1,043	7,565	2,866	4,733	609	88	16,904	↑ 5.4%
MAR	1,251	9,427	3,813	6,879	835	396	22,601	↑ 23.6%
APR	2,041	8,118	3,858	7,062	521	101	21,701	↑ 15.8%
MAY	2,044	10,089	3,860	7,446	593	144	24,176	↑ 15.1%
JUN	3,203	8,629	3,860	7,306	504	72	23,574	↑ 11.8%
JUL	3,477	8,381	3,930	7,831	454	142	24,215	↑ 7.5%
AUG	2,573	7,979	3,855	7,210	636	41	22,294	↑ 4.6%
SEP	1,836	9,447	3,691	7,461	461	145	23,041	↑ 9.6%
OCT	2,127	10,527	3,950	7,656	585	0	24,845	↑ 11.8%
NOV	2,142	9,239	3,323	6,465	726	95	21,990	↑ 4.1%
DEC	2,408	10,833	3,601	6,739	568	146	24,295	↑ 25.1%
<b>TOTAL</b>	<b>25,233</b>	<b>108,833</b>	<b>44,039</b>	<b>81,329</b>	<b>7,037</b>	<b>1,558</b>	<b>268,029</b>	<b>12.3%</b>

2018	Allegiant (LAX, LAS)	*American (DFW, PHX, LAX)	*Delta (SLC)	*United (DEN)	Denver Air	Charters	Total
JAN	1,148	7,444	2,899	4,033	751	0	16,275
FEB	1,043	7,217	2,771	3,827	921	261	16,040
MAR	1,282	8,195	3,202	4,550	1061	0	18,290
APR	1,191	7,726	3,438	5,663	637	88	18,743
MAY	1,010	9,068	3,909	6,204	660	148	20,999
JUN	2,131	9,427	3,519	5,255	643	110	21,085
JUL	2,468	9,805	3,882	5,656	573	139	22,523
AUG	1,639	9,299	3,668	5,913	803	0	21,322
SEP	960	8,593	3,689	7,071	572	143	21,028
OCT	1,165	9,254	4,024	7,046	620	110	22,219
NOV	1,165	8,565	3,905	6,643	584	262	21,124
DEC	1,210	8,194	3,639	5,412	850	110	19,415
<b>TOTAL</b>	<b>16,412</b>	<b>102,787</b>	<b>42,545</b>	<b>67,273</b>	<b>8,675</b>	<b>1,371</b>	<b>239,063</b>

## 2019 Enplaned and Deplaned Airfreight

### 2018 YTD

Enplaned Freight	3,625,392
Deplaned Freight	6,097,424

### 2019 YTD

Enplaned Freight	3,502,091	↓ -3.40%
Deplaned Freight	6,012,865	↓ -1.39%

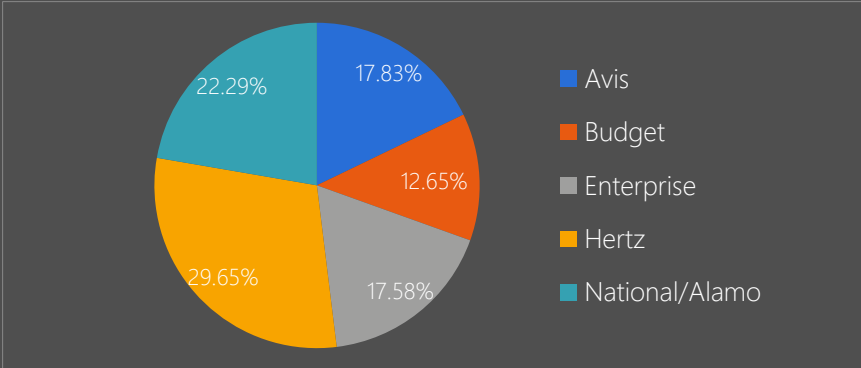
Enplaned	FedEx	Key Lime	American	United	Delta	Total
JAN	310,448	26,263	891	1,430	390	339,422
FEB	267,497	24,236	409	705	817	293,664
MAR	305,513	19,506	728	58	1,552	327,357
APR	222,419	26,150	390	186	1,320	250,465
MAY	234,202	24,306	379	286	1,310	260,483
JUN	232,493	21,845	250	37	1,460	256,085
JUL	243,395	29,947	250	200	1,369	275,161
AUG	301,489	26,354	216	289	1,538	329,886
SEP	244,040	28,691	173	520	1,320	274,744
OCT	255,723	23,755	173	389	1,211	281,251
NOV	225,863	23,989	128	351	1,250	251,581
DEC	330,504	29,894	105	228	1,261	361,992
<b>TOTAL</b>	<b>3,173,586</b>	<b>304,936</b>	<b>4,092</b>	<b>4,679</b>	<b>14,798</b>	<b>3,502,091</b>

Deplaned	FedEx	Key Lime	American	United	Delta	Total
JAN	440,650	67,618	1,418	349	242	510,277
FEB	428,643	60,806	1,175	422	41	491,087
MAR	463,510	51,195	777	530	586	516,598
APR	366,109	84,014	372	761	132	451,388
MAY	403,128	103,477	330	426	122	507,483
JUN	395,116	87,166	64	315	90	482,751
JUL	426,189	98,555	64	429	112	525,349
AUG	460,205	92,634	252	426	51	553,568
SEP	346,025	80,370	49	627	66	427,137
OCT	381,131	105,853	49	399	125	487,557
NOV	341,288	63,247	241	587	162	405,525
DEC	576,535	76,429	139	763	279	654,145
<b>TOTAL</b>	<b>5,028,529</b>	<b>971,364</b>	<b>4,930</b>	<b>6,034</b>	<b>2,008</b>	<b>6,012,865</b>

# 2019 Rental Car Revenues

2018 YTD Revenues 8,993,584.60

2019 YTD Revenues 9,396,677.38 ↑ 4.48%



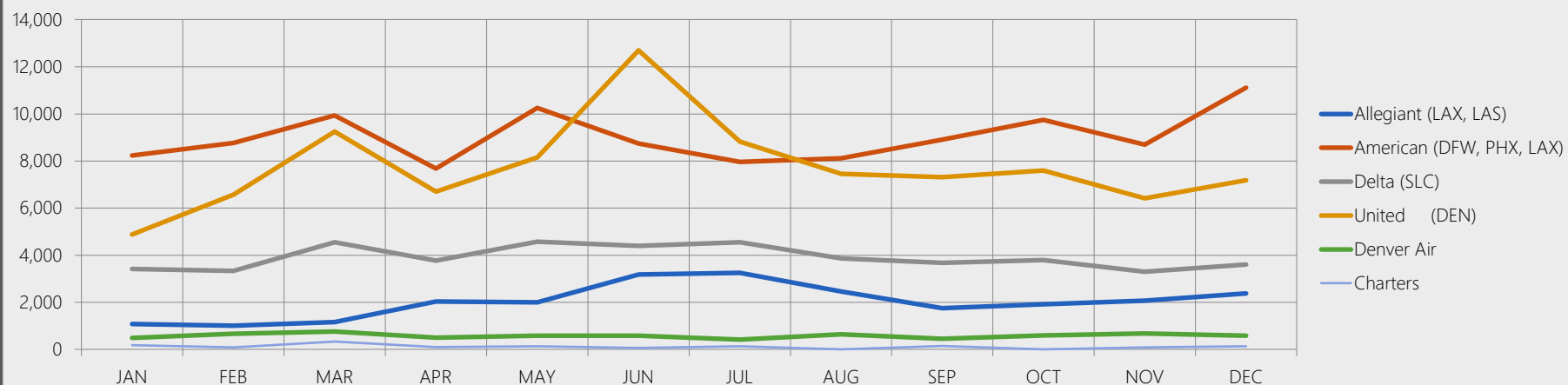
2019	Avis	Budget	Enterprise	Hertz	National/Alamo	Total
JAN	133,845	64,988	98,099	170,635	141,595	609,161
FEB	94,313	83,506	105,046	150,218	148,191	581,274
MAR	130,121	128,641	144,616	219,469	188,813	811,660
APR	119,889	67,071	124,570	206,435	163,421	681,386
MAY	131,893	96,268	162,950	277,373	197,973	866,457
JUN	157,696	121,131	152,445	292,509	190,179	913,960
JUL	174,129	123,844	148,999	311,925	208,163	967,060
AUG	173,825	119,274	146,667	266,192	203,038	908,996
SEP	171,664	108,670	157,503	272,371	205,433	915,641
OCT	174,116	107,998	197,061	258,172	188,321	925,668
NOV	104,875	75,974	120,734	182,634	130,369	614,586
DEC	109,472	91,189	93,286	177,943	128,938	600,828
<b>TOTAL</b>	<b>1,675,839</b>	<b>1,188,554</b>	<b>1,651,976</b>	<b>2,785,876</b>	<b>2,094,434</b>	<b>9,396,677</b>
Market Share	17.83%	12.65%	17.58%	29.65%	22.29%	100.00%

\*Rental Car Company located OFF-AIRPORT.

## 2019 Aircraft Operations

ITINERANT						LOCAL			
2019	Air Carrier	Air Taxi	General Aviation	Military	TOTAL ITINERANT	Local Civilian	Local Military	TOTAL LOCAL	TOTAL
JAN	438	776	1,336	105	2,655	656	114	770	3,425
FEB	441	720	1,217	179	2,557	766	150	916	3,473
MAR	574	847	1,624	172	3,217	828	74	902	4,119
APR	448	666	1,401	125	2,640	630	108	738	3,378
MAY	569	773	1,559	134	3,035	946	94	1,040	4,075
JUN	645	688	1,789	131	3,253	932	108	1,040	4,293
JUL	558	674	1,956	132	3,320	932	96	1,028	4,348
AUG	516	787	1,984	163	3,450	710	96	806	4,256
SEP	490	775	1,721	141	3,127	768	46	814	3,941
OCT	531	862	1,774	175	3,342	574	88	662	4,004
NOV	565	682	1,466	136	2,849	874	88	962	3,811
DEC	655	810	1,461	82	3,008	1,172	36	1,208	4,216
<b>TOTAL</b>	<b>6,430</b>	<b>9,060</b>	<b>19,288</b>	<b>1,675</b>	<b>36,453</b>	<b>9,788</b>	<b>1,098</b>	<b>10,886</b>	<b>47,339</b>
Historial Data	2015	2016	2017	2018	2019	2018-2019 Inc/Dec			
JAN	3,363	3,142	3,325	3,320	3,425	↑	3.16%		
FEB	3,360	3,600	2,888	2,945	3,473	↑	17.93%		
MAR	3,966	3,808	4,356	3,931	4,119	↑	4.78%		
APR	3,597	3,191	3,717	3,670	3,378	↓	-7.96%		
MAY	3,573	3,810	3,821	3,908	4,075	↑	4.27%		
JUN	3,968	4,080	4,839	4,287	4,293	↑	0.14%		
JUL	3,671	4,044	3,997	5,195	4,348	↓	-16.30%		
AUG	3,680	4,111	4,084	5,139	4,256	↓	-17.18%		
SEP	3,801	3,797	3,496	4,161	3,941	↓	-5.29%		
OCT	3,672	4,322	3,752	4,600	4,004	↓	-12.96%		
NOV	3,175	3,651	3,074	4,092	3,811	↓	-6.87%		
DEC	3,298	3,448	2,957	3,612	4,216	↑	16.72%		
<b>TOTAL</b>	<b>43,124</b>	<b>45,004</b>	<b>44,306</b>	<b>48,860</b>	<b>47,339</b>				

## Passenger Deplanements (Rev & Non-Rev)



2019	Allegiant (LAX, LAS)	American (DFW, PHX, LAX)	Delta (SLC)	United (DEN)	Denver Air	Charters	Total	Annual Inc/Dec
JAN	1,081	8,235	3,424	4,882	488	188	18,298	↑ 2.0%
FEB	1,003	8,764	3,341	6,569	672	88	20,437	↑ 1.0%
MAR	1,164	9,936	4,559	9,253	764	333	26,009	↑ 23.9%
APR	2,039	7,672	3,770	6,699	504	102	20,786	↑ 12.9%
MAY	2,009	10,250	4,577	8,152	586	144	25,718	↑ 22.2%
JUN	3,183	8,748	4,403	12,696	587	72	29,689	↑ 38.9%
JUL	3,256	7,960	4,548	8,830	418	142	25,154	↑ 8.9%
AUG	2,460	8,120	3,866	7,456	647	11	22,560	↑ 8.3%
SEP	1,757	8,904	3,680	7,316	452	147	22,256	↑ 9.9%
OCT	1,921	9,750	3,794	7,603	601	0	23,669	↑ 9.5%
NOV	2,076	8,699	3,298	6,413	679	96	21,261	↑ 3.0%
DEC	2,378	11,109	3,609	7,183	589	144	25,012	↑ 12.7%
<b>TOTAL</b>	<b>24,327</b>	<b>108,147</b>	<b>46,869</b>	<b>93,052</b>	<b>6,987</b>	<b>1,467</b>	<b>280,849</b>	<b>12.8%</b>