



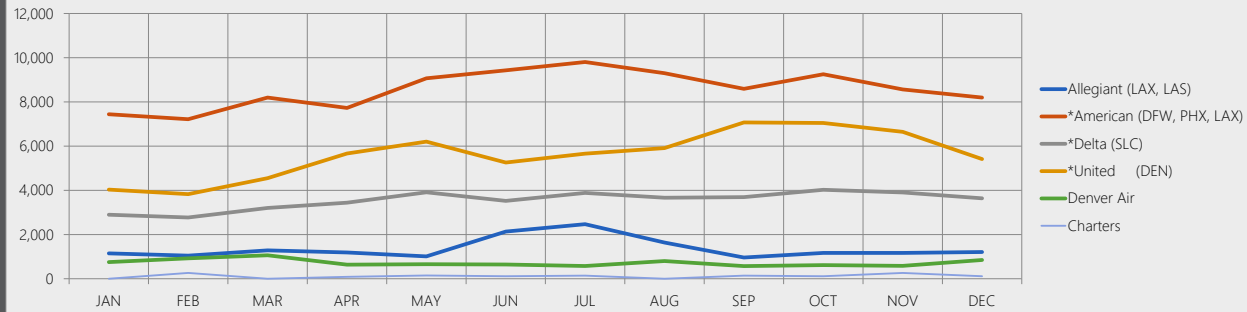
GRAND JUNCTION REGIONAL AIRPORT

December 2018

DATA & STATISTICS

Passenger Enplanements (Rev & Non-Rev)

*Prior numbers have been adjusted to include non-revenue passengers



2018	Allegiant (LAX, LAS)	*American (DFW, PHX, LAX)	*Delta (SLC)	*United (DEN)	Denver Air	Charters	Total	Annual Inc/Dec
JAN	1,148	7,444	2,899	4,033	751	0	16,275	↓ -8.5%
FEB	1,043	7,217	2,771	3,827	921	261	16,040	↓ -3.2%
MAR	1,282	8,195	3,202	4,550	1,061	0	18,290	↓ -6.4%
APR	1,191	7,726	3,438	5,663	637	88	18,743	↓ -6.2%
MAY	1,010	9,068	3,909	6,204	660	148	20,999	↓ -2.9%
JUN	2,131	9,427	3,519	5,255	643	110	21,085	↓ -4.8%
JUL	2,468	9,805	3,882	5,656	573	139	22,523	↑ 3.5%
AUG	1,639	9,299	3,668	5,913	803	0	21,322	↑ 7.4%
SEP	960	8,593	3,689	7,071	572	143	21,028	↑ 1.6%
OCT	1,165	9,254	4,024	7,046	620	110	22,219	↓ -1.7%
NOV	1,165	8,565	3,905	6,643	584	262	21,124	↑ 6.9%
DEC	1,210	8,194	3,639	5,412	850	110	19,415	↑ 9.1%
TOTAL	16,412	102,787	42,545	67,273	8,675	1,371	239,063	-0.4%

2017	Allegiant (LAX, LAS)	*American (DFW, PHX, LAX)	*Delta (SLC)	*United (DEN)	Denver Air	Charters	Total
JAN	1,152	8,445	3,266	4,152	657	107	17,779
FEB	1,045	7,541	2,839	4,455	671	12	16,563
MAR	1,231	8,295	3,505	5,436	832	241	19,540
APR	1,245	8,029	3,644	6,409	578	80	19,985
MAY	1,141	8,789	3,989	6,776	641	296	21,632
JUN	2,301	9,367	3,975	5,619	618	276	22,156
JUL	2,610	9,770	3,817	4,959	606	0	21,762
AUG	1,720	8,571	3,563	5,426	431	149	19,860
SEP	991	9,075	3,828	6,202	606	0	20,702
OCT	1,086	10,061	3,705	7,116	631	0	22,599
NOV	1,250	8,542	3,696	5,554	720	0	19,762
DEC	1,046	8,211	3,487	4,037	923	88	17,792
TOTAL	16,818	104,696	43,314	66,141	7,914	1,249	240,132

2018 Enplaned and Deplaned Airfreight

2017 YTD

Enplaned Freight	3,819,608
Deplaned Freight	6,443,851

2018 YTD

Enplaned Freight	3,625,392	↓ -5.08%
Deplaned Freight	6,097,424	↓ -5.38%

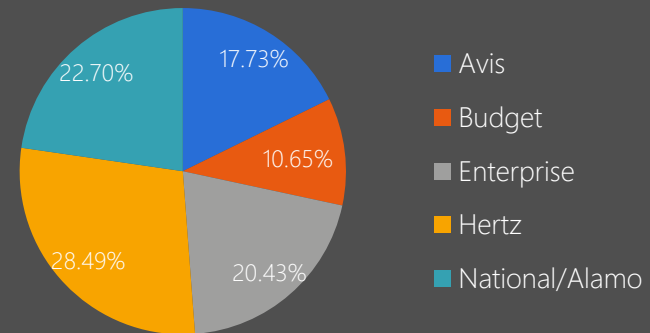
Enplaned	FedEx	Key Lime	American	United	Delta	Total
JAN	376,623	63,108	1,241	733	241	441,946
FEB	292,527	31,727	669	696	138	325,757
MAR	310,361	31,529	513	1,400	238	344,041
APR	227,204	36,424	459	1,237	350	265,674
MAY	248,033	38,265	1,624	1,493	138	289,553
JUN	241,635	28,993	301	1,382	354	272,665
JUL	226,394	29,273	236	1,397	87	257,387
AUG	293,030	33,726	795	2,271	684	330,506
SEP	233,034	31,235	398	1,538	72	266,277
OCT	227,351	32,037	899	1,735	64	262,086
NOV	230,808	28,525	894	1,467	125	261,819
DEC	286,822	18,537	694	1,415	213	307,681
TOTAL	3,193,822	403,379	8,723	16,764	2,704	3,625,392

Deplaned	FedEx	Key Lime	American	United	Delta	Total
JAN	662,698	99,219	2,141	2,747	362	767,167
FEB	371,000	59,340	100	1,690	674	432,804
MAR	423,002	63,990	369	512	245	488,118
APR	302,256	56,140	564	209	259	359,428
MAY	363,658	73,050	1,844	517	590	439,659
JUN	467,758	67,840	25	1,343	1,126	538,092
JUL	428,353	70,270	102	1,342	87	500,154
AUG	457,241	81,585	-	547	684	540,057
SEP	377,940	70,712	33	587	193	449,465
OCT	426,298	64,179	983	397	271	492,128
NOV	385,688	75,755	1,219	321	195	463,178
DEC	518,786	107,317	543	368	160	627,174
TOTAL	5,184,678	889,397	7,923	10,580	4,846	6,097,424

2018 Rental Car Revenues

2017 YTD Revenues 8,648,082.38

2018 YTD Revenues 8,993,813.53 ↑ 4.00%



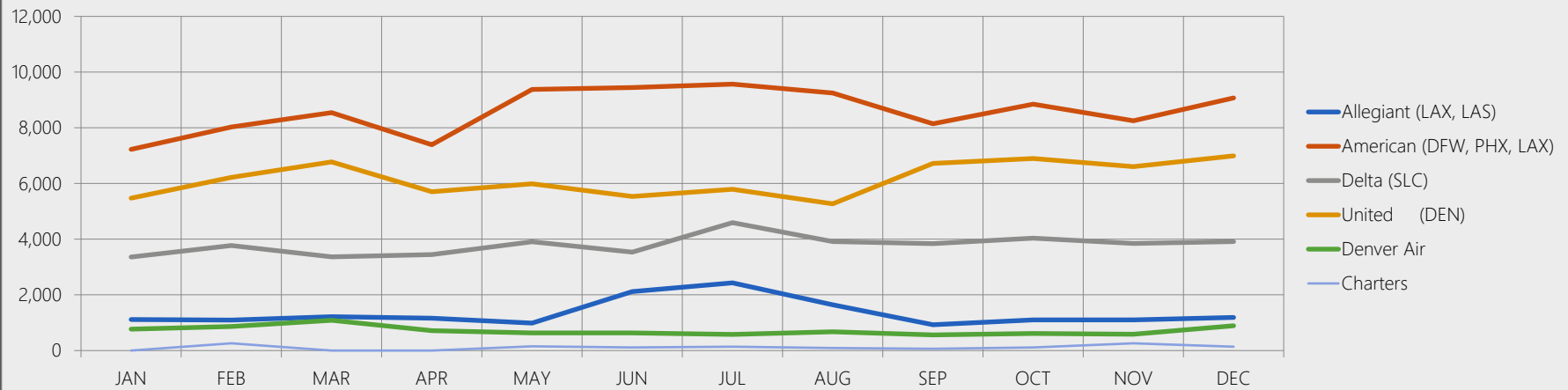
2018	Avis	Budget	Enterprise	Hertz	National/Alamo	Total
JAN	102,572	52,751	105,862	131,157	115,427	507,769
FEB	99,949	58,596	109,394	171,425	120,060	559,424
MAR	116,415	78,460	118,071	180,021	120,060	613,027
APR	119,523	77,304	133,212	180,747	146,395	657,181
MAY	135,488	86,179	159,911	246,209	184,358	812,145
JUN	143,540	90,740	177,597	267,454	179,597	858,929
JUL	171,191	117,617	186,304	292,815	228,382	996,309
AUG	181,623	102,071	213,411	264,350	265,903	1,027,359
SEP	185,089	107,355	200,118	247,906	193,814	934,282
OCT	150,368	77,355	215,379	245,136	208,024	896,261
NOV	90,419	57,072	124,001	170,109	152,091	593,692
DEC	98,370	51,987	94,152	165,195	127,729	537,433
TOTAL	1,594,547	957,489	1,837,412	2,562,524	2,041,841	8,993,814
Market Share	17.73%	10.65%	20.43%	28.49%	22.70%	100.00%

*Rental Car Company located OFF-AIRPORT.

2018 Aircraft Operations

2018	ITINERANT					LOCAL			TOTAL
	Air Carrier	Air Taxi	General Aviation	Military	TOTAL ITINERANT	Local Civilian	Local Military	TOTAL LOCAL	
JAN	438	780	1,234	190	2,642	560	118	678	3,320
FEB	422	843	1,168	68	2,501	416	28	444	2,945
MAR	422	813	1,584	144	2,963	936	32	968	3,931
APR	320	794	1,454	100	2,668	982	20	1,002	3,670
MAY	340	801	1,713	128	2,982	870	56	926	3,908
JUN	383	853	2,087	150	3,473	772	42	814	4,287
JUL	445	761	2,870	143	4,219	976	0	976	5,195
AUG	411	809	2,843	142	4,205	902	32	934	5,139
SEP	411	700	1,900	172	3,183	842	136	978	4,161
OCT	436	765	1,630	149	2,980	1,478	142	1,620	4,600
NOV	425	686	1,593	160	2,864	1,182	46	1,228	4,092
DEC	484	721	1,293	140	2,638	904	70	974	3,612
TOTAL	4,937	9,326	21,369	1,686	37,318	10,820	722	11,542	48,860
Historial Data	2014	2015	2016	2017	2018	2017-2018 Inc/Dec			
JAN	4,453	3,363	3,142	3,325	3,320	↓	-0.15%		
FEB	3,188	3,360	3,600	2,888	2,945	↑	1.97%		
MAR	3,678	3,966	3,808	4,356	3,931	↓	-9.76%		
APR	4,027	3,597	3,191	3,717	3,670	↓	-1.26%		
MAY	3,865	3,573	3,810	3,821	3,908	↑	2.28%		
JUN	4,176	3,968	4,080	4,839	4,287	↓	-11.41%		
JUL	4,710	3,671	4,044	3,997	5,195	↑	29.97%		
AUG	3,993	3,680	4,111	4,084	5,139	↑	25.83%		
SEP	3,757	3,801	3,797	3,496	4,161	↑	19.02%		
OCT	3,809	3,672	4,322	3,752	4,600	↑	22.60%		
NOV	3,094	3,175	3,651	3,074	4,092	↑	33.12%		
DEC	3,290	3,298	3,448	2,957	3,612	↑	22.15%		
TOTAL	46,040	43,124	45,004	44,306	48,860				

Passenger Deplanements (Rev & Non-Rev)



2018	Allegiant (LAX, LAS)	American (DFW, PHX, LAX)	Delta (SLC)	United (DEN)	Denver Air	Charters	Total	Annual Inc/Dec	Annual Inc/Dec
JAN	1,116	7,224	3,359	5,476	771	0	17,946	↑	4.2%
FEB	1,094	8,028	3,770	6,219	867	261	20,239	↑	7.1%
MAR	1,217	8,544	3,365	6,776	1,087	0	20,989	↑	4.8%
APR	1,160	7,392	3,447	5,705	715	0	18,419	↓	-5.5%
MAY	988	9,374	3,905	5,989	636	155	21,047	↓	-1.6%
JUN	2,118	9,446	3,537	5,533	631	110	21,375	↓	-5.2%
JUL	2,431	9,567	4,593	5,790	578	139	23,098	↑	9.5%
AUG	1,645	9,248	3,912	5,269	677	88	20,839	↑	2.7%
SEP	927	8,145	3,836	6,722	562	66	20,258	↑	0.6%
OCT	1,101	8,850	4,033	6,898	616	110	21,608	↓	-0.1%
NOV	1,101	8,252	3,844	6,608	584	259	20,648	↑	7.2%
DEC	1,186	9,073	3,915	6,991	892	139	22,196	↑	17.5%
TOTAL	16,084	103,143	45,516	73,976	8,616	1,327	248,662		3.4%